



## Test of Essential Academic Skills (TEAS)...

The Test of Essential Academic Skills (TEAS) is a pre-entry test used to evaluate the academic preparedness of students, and is required as a part of application for admission to the Practical Nursing Certificate or the Associate Degree Nursing programs (**Option One, Two, and Three**) at NRCC.

The TEAS consists of a total of 125 questions on three subtest areas: science, English, and reading. All subtests contain multiple choice items with one correct answer. Scores in each area need to be **45<sup>th</sup> percentile or above** to be competitive for the RN program.

- The science subtest covers science reasoning, science knowledge, biology, chemistry, anatomy and physiology, basic physical principles, and general science (30 questions; 38 minutes).
- The English subtest measures knowledge of punctuation, grammar, sentence structure, contextual words, and spelling (55 questions; 65 minutes).
- The reading subtest covers paragraph comprehension, passage comprehension, and inferences/conclusions (40 questions; 50 minutes).

### Preparing for the TEAS

---

There is no required preparation for the TEAS, as it is an assessment of essential academic skills. However, students often ask about study guide resources, and ATI offers certified study materials for purchase by students. The optional study packet includes both a study manual and online practice assessments. These practice assessments are like the real TEAS test and provide students with a score sheet indicating overall percentile rank (used for program admission decisions), as well as detailed scores in each of the subject areas. This may help with direction on study efforts, and focusing on areas needing improvement.

Go to [www.atitesting.com/onlinestore](http://www.atitesting.com/onlinestore) for more information. These materials are only available through ATI.

To learn more about the TEAS or to purchase study materials, access the web site at:

[www.atitesting.com](http://www.atitesting.com)

For a list of frequently asked questions regarding the TEAS, please go to

[www.atitesting.com/global/students/teas-faq.aspx](http://www.atitesting.com/global/students/teas-faq.aspx)

## **Scheduling and Paying for TEAS**

---

The TEAS test is an online assessment which must be completed in a proctored setting in Dublin at the college's Distance Education Testing Center located in the library. Students applying for Fall Semester 2010 should schedule an appointment as soon as possible. During this period, appointments are available Monday through Friday at either 9:00am or 1:00pm. **Once scheduled, appointments for test will not be rescheduled unless an emergency. Documentation must be provided.** Additional dates may be added if needed. If added, dates will not be mailed out but posted **online only**. Three computer stations are available, so please help the college serve students more effectively by calling the Testing Center staff at (540)674-3600 extension 4439 or extension 4376 to schedule a date and time so that a computer will be available.

The test fee is \$25, and is paid directly to the test publisher via a secure online credit card transaction. Once a student logs into the test, the payment screen appears and will direct the student how to proceed. Bringing a credit card to the testing appointment is essential.

Students may take the TEAS once per year.

| <b>TEAS Testing Schedule: 2010</b> |                   |                         |        |
|------------------------------------|-------------------|-------------------------|--------|
| Day                                | Date              | Testing Times Available |        |
| Monday                             | February 1, 2010  | 9:00AM                  | 1:00PM |
| Tuesday                            | February 2, 2010  | 9:00AM                  | 1:00PM |
| Wednesday                          | February 3, 2010  | 9:00AM                  | 1:00PM |
| Thursday                           | February 4, 2010  | 9:00AM                  | 1:00PM |
| Friday                             | February 5, 2010  | 9:00AM                  | 1:00PM |
| Monday                             | February 8, 2010  | 9:00AM                  | 1:00PM |
| Tuesday                            | February 9, 2010  | 9:00AM                  | 1:00PM |
| Wednesday                          | February 10, 2010 | 9:00AM                  | 1:00PM |
| Thursday                           | February 11, 2010 | 9:00AM                  | 1:00PM |
| Friday                             | February 12, 2010 | 9:00AM                  | 1:00PM |
| Monday                             | February 15, 2010 | 9:00AM                  | 1:00PM |
| Tuesday                            | February 16, 2010 | 9:00AM                  | 1:00PM |
| Wednesday                          | February 17, 2010 | 9:00AM                  | 1:00PM |
| Thursday                           | February 18, 2010 | 9:00AM                  | 1:00PM |
| Friday                             | February 19, 2010 | 9:00AM                  | 1:00PM |
| Monday                             | February 22, 2010 | 9:00AM                  | 1:00PM |
| Tuesday                            | February 23, 2010 | 9:00AM                  | 1:00PM |

|                        |                      |                       |                          |
|------------------------|----------------------|-----------------------|--------------------------|
| Wednesday              | February 24, 2010    | 9:00AM                | 1:00PM                   |
| Thursday               | February 25, 2010    | 9:00AM                | 1:00PM                   |
| Friday                 | February 26, 2010    | 9:00AM                | 1:00PM                   |
| Monday                 | March 1, 2010        | 9:00AM                | 1:00PM                   |
| Tuesday                | March 2, 2010        | 9:00AM                | 1:00PM                   |
| Wednesday              | March 3, 2010        | 9:00AM                | 1:00PM                   |
| Thursday               | March 4, 2010        | 9:00AM                | 1:00PM                   |
| Friday                 | March 5, 2010        | 9:00AM                | 1:00PM                   |
| Monday                 | March 8, 2010        | 9:00AM                | 1:00PM                   |
| Tuesday                | March 9, 2010        | 9:00AM                | 1:00PM                   |
| Wednesday              | March 10, 2010       | 9:00AM                | 1:00PM                   |
| <b>**NO OTHER TEAS</b> | <b>TESTING DATES</b> | <b>WILL BE ADDED.</b> | <b>Register ASAP. **</b> |

## Getting Test Scores

---

Following completion of the TEAS, test results are immediately available online to the student and also to Kimberly Johnston, the Nursing Admission Advisor.

## Important Information about the Testing Process:

---

- TEAS is a timed assessment, and the maximum time allowed to complete the test is 2 hours and 33 minutes.
- TEAS is administered in a proctored setting with a Testing Center staff member present. The TEAS testing platform permits monitoring of each individual's computer screen and cursor movements while the test is in progress. Use of staff and electronic surveillance are employed to maintain integrity of the testing process.
- A student who has taken a previous ATI test (e.g., online practice assessment) must remember his or her password. If the password is forgotten, please call ATI *before* the test date (1-800-667-7531).
- Arrive for testing 15 minutes early.
- NRCC's library is located on the first floor of Martin Hall.
- Photo identification is required prior to entering the test room. An appropriate photo identification is limited to one of the following: current state motor vehicle driver's license, current passport, current state motor vehicle identification card, or United States military identification card. Failure to show appropriate photo identification makes a student ineligible to take the test at the scheduled time.
- A credit/debit card is required for payment directly to the test publisher via a secured online transaction.

- TEAS may not be completed in segments. The entire test must be completed once a student has begun testing.
- No calculators are permitted. Additionally, PDAs, cell phones, and other electronic devices are prohibited.
- Books or papers are not permitted in the test room. Scratch paper and pencils are provided.

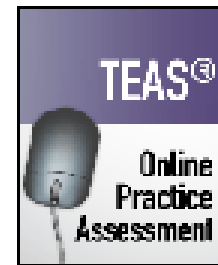
*Continued*

## **Study/Practice Test Information**

[www.atitesting.com](http://www.atitesting.com)

## ATI Test of Essential Academic Skills (TEAS®) Online Practice Assessment

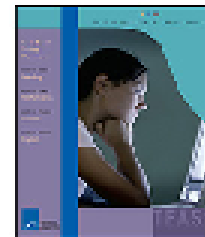
A 100-question practice assessment to help students prepare for the TEAS®, with sample questions and rationales covering Reading, Math, Science, and English and Language Usage



[🔍 Learn More](#) [🛒 Buy This Product](#)

## ATI Test of Essential Academic Skills (TEAS®) Study Manual

A 225-page guide to preparing for the TEAS®, featuring review material, practice exercises, and sample tests covering Reading, Math, Science, and English and Language Usage



[🔍 Learn More](#) [🛒 Buy This Product](#)

## ATI Test of Essential Academic Skills (TEAS®) Online Practice Assessment + TEAS® Study Manual - Only \$58.00!

A 100-question assessment of Math, Science, Reading, and English and Language Usage skills PLUS an online practice test of those skills PLUS a study manual to prepare for both!



[🔍 Learn More](#) [🛒 Buy This Product](#)